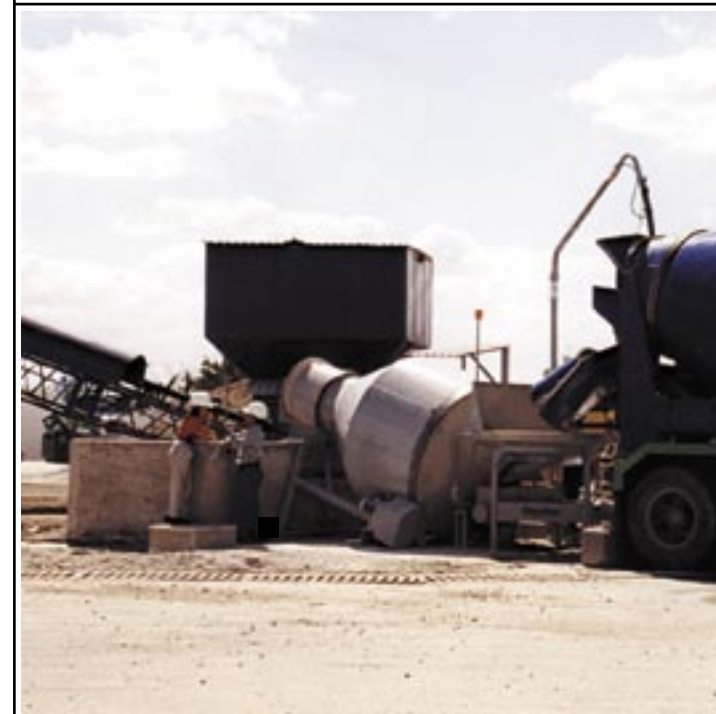


Technical Data and Dimensions

	RA-20	RA-6
Recycling Capacity, Normal Concrete:	30 yd ³ /hr	8 yd ³ /hr
Feed Capacity (Initial, Empty Drum):	2.5 yd ³	1 yd ³
Feed Capacity (Continuous, after 2.5 yd ³):	1 yd ³ / 2 minutes	1 yd ³ / 7.5 minutes
Max. Aggregate Size:	3 inches	3 inches
Cut Size (max. fine agg particle size in gray water):	.02 mm / 65 mesh sieve	.02 mm / 65 mesh sieve
Drum Speed:	4 rpm	6 rpm
Standard Hopper Size:	10' 6" x 5'	5' 6" dia., x 4'6" W'
Optional Screw-fed Surge Trough Capacity:	20'x6'; 10yd ³	N/A
Water Flow (Drum and Hopper):	20-30 gpm	15 gpm
Water Flow (Flush Boom):	250 gpm	250 gpm
Volume of Water in Drum:	1,000 gal.	250gal.
Shipping Weight:	5.2 tons / 10,400 lbs	2.5 tons / 5,060 lbs
Dimensions of Plant Incl. Hopper:	10'6" x 24'6" x 9'6"	7'8" x 22'0" x 7'9"
Number of Truck Mixers Wash Stations:		
with Standard rectangular Hopper	2	1
with Screw-fed Surge Trough	up to 4	N/A
Standard Agitation Basin Dimensions:		
Capacity	25,000 gal.	adjustable
Above Ground Agitation Tank Dimensions:		
Capacity	9,500 gal.	adjustable

Is the RA-20 too big for your recycling needs? Ask about the 8-cubic yard per hour RA-6. Same Schwing quality, but sized just right for smaller ready mixed, portable and precast plants.

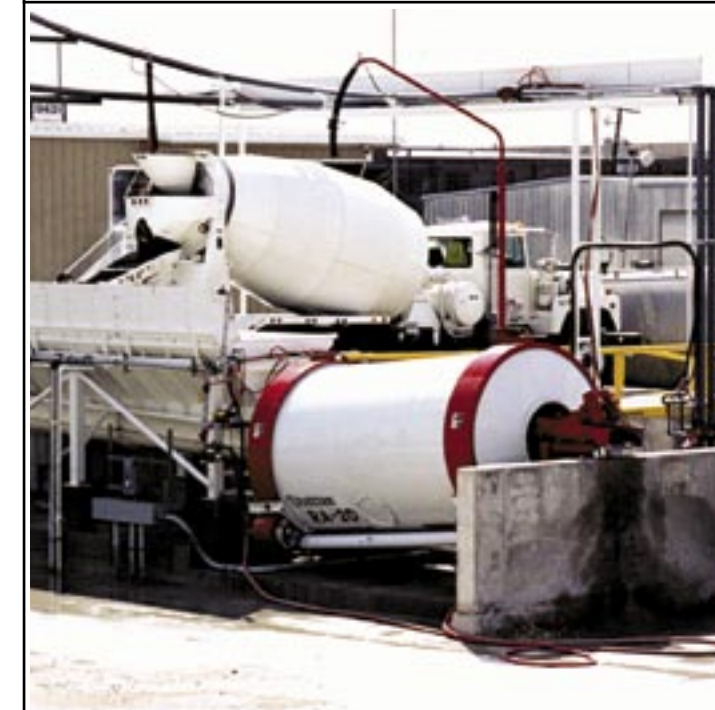
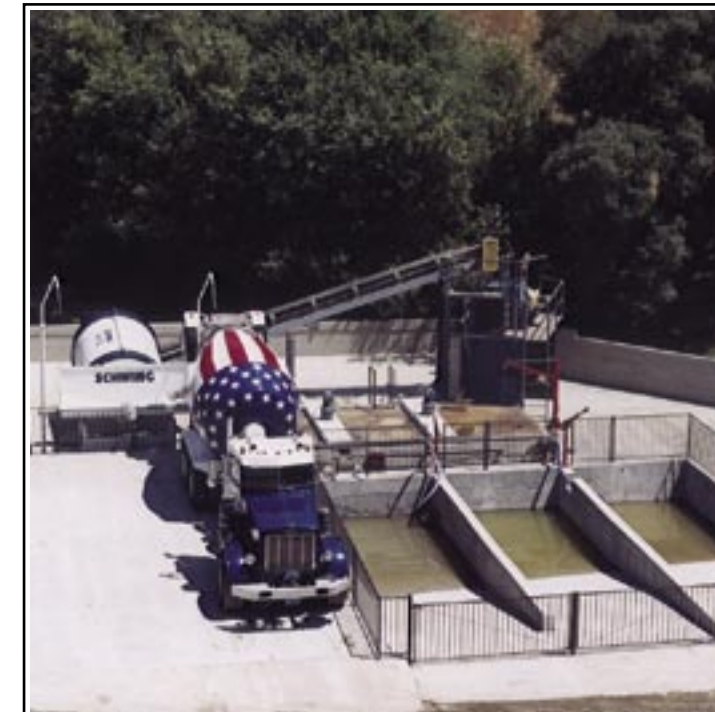
Come visit the largest concrete pump manufacturing plant in North America where the full line of Schwing products are built, including Recyclers and Truck Mixers This factory supports a nationwide network of dealers and branches strategically located throughout the country. This means readily available parts and service for our customers.


**SCHWING
Stetter**
MATERIAL HANDLING

5900 Centerville Road
St. Paul, MN 55127
TEL 651-429-0999
FAX 651-429-3464

1-888-SCHWING
www.schwing.com

Represented by

**RA-20
RA-6
Concrete Recyclers**


Ask the experts for simple and complete regulatory compliance with fast return on your investment through 100% recycling of returned concrete.

Painless recycling with the Schwing RA-20 relies on our low maintenance, rotating drum design to wash returned concrete. Our complete system incorporates a screen to separate sand and aggregate while the cement remains in suspension. The resulting gray water is a valuable addition to fresh batches. Most important is the turnkey design, build and instal-

lation Schwing engineers and technicians provide. Our history in recycling spans more than two decades so your RA-20 benefits from more than 50 successful Schwing installations. These customers enjoy higher truck utilization through fast cleanout and elimination of landfill costs for cement paste.

Schwing's experience in recycling recognizes that operator convenience is an important part of a successful operation. That's why we offer several alternatives to accommodate your needs. From one-touch pushbutton operation for processing each load to holding troughs designed to speed concrete discharge to flow gates to control discharge, Schwing

has the solution to your returned concrete problem. Fail-safe features prevent overcharging of the RA-20 hopper and automatic metering of flushwater minimizes water usage.

RECYCLING AS SIMPLE AS

1-2-3



1

Operators can drive over a surge hopper or back up to the RA-20 hopper or trough. One button activates flush booms and hopper vibrator to feed concrete into the rotating drum. Power sensors monitor electric motor current draw to restrict material access to drum and prevent overloading. Discharge takes two minutes per cubic yard.

2

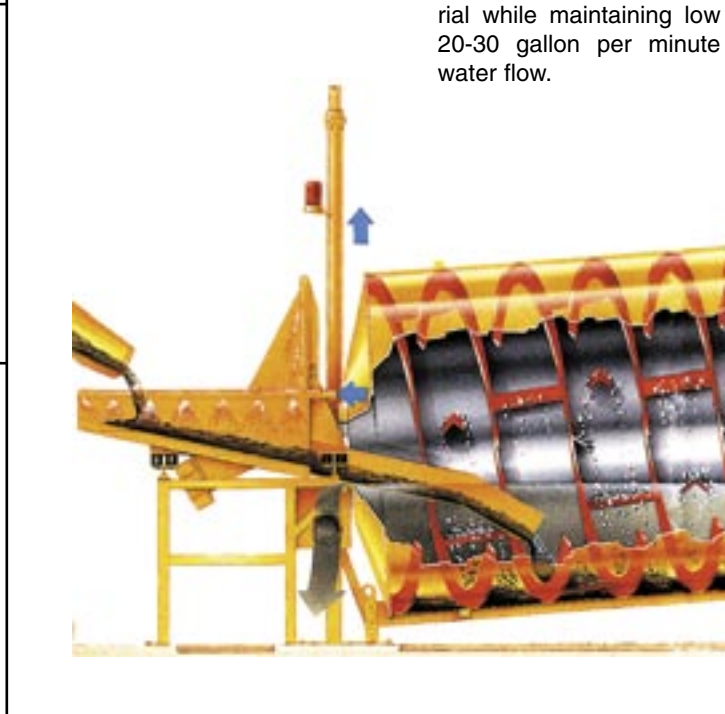
Rotating drum tumbles sand and aggregate at 4 RPM using a simple friction roller drive with no metal to metal contact for extraordinary durability. Fins along the length of the drum separate cement while internal spray bars effectively clean the material while maintaining low 20-30 gallon per minute water flow.



This RA-20 zero discharge plant with drive over surge hopper recycles all gray water and captured storm water.



Screw troughs (backup or drive over) allow drivers to dump up to 10 yards of leftover concrete at once for gradual feeding to the RA-20.



Custom Installation and Engineering Solutions

Program your RA-20 for fool-proof operation. All timed functions such as drum and agitator operations are activated and monitored by the dependable controller. A custom program is designed for your operation and may include: daily backflushing of slurry lines to prevent cement build-up; automatic sequencing of drum rotation and agitators to prevent freezing in cold cli-

mates; and integration of vibrating screen operation when material is being recycled. A user-friendly control panel displays operating data and advises of scheduled maintenance. Timed functions are easily adjusted using a simple menu.



Automated controls

Schwing reclaiming and recycling systems are controlled with Allen Bradley™ PLC panels with touch screen menu for adjusting settings.

This simple design requires no moving parts exposed to the gray water resulting in extremely low maintenance requirements. Buckets lift the washed sand and aggregate and deposit the cleaned material on the vibrating discharge chute, cement and water are drawn off the low end of the RA-20.

3

Washing drum process produces clean, well-graded aggregate while using a minimal amount of flushing water.

Gray water in agitation tank can be heated or cooled for year round utilization.

100% Drive Over:
Screw-feed surge hopper with grate offers "no-backing" traffic pattern

All Schwing RA-20 installations are custom-engineered according to the customer's needs and space available:

Basic System:
Water and solids discharged to sedimentation pit system

100 % Modular:
Water and solids held in aboveground tank for portable installations and where excavation is not practical

100% System:
Water and solids discharged to in-ground agitation tank for use as batch water